

# LEGACY PLACE PLAT NO. 2

BEING A REPLAT OF A PORTION OF PARCEL I, LEGACY PLACE AS RECORDED IN PLAT BOOK 90, PAGES 119 THROUGH 121, PUBLIC RECORDS OF PALM BEACH COUNTY, FLORIDA, LYING IN SECTION 6, TOWNSHIP 42 SOUTH, RANGE 43 EAST, CITY OF PALM BEACH GARDENS, PALM BEACH COUNTY, FLORIDA.

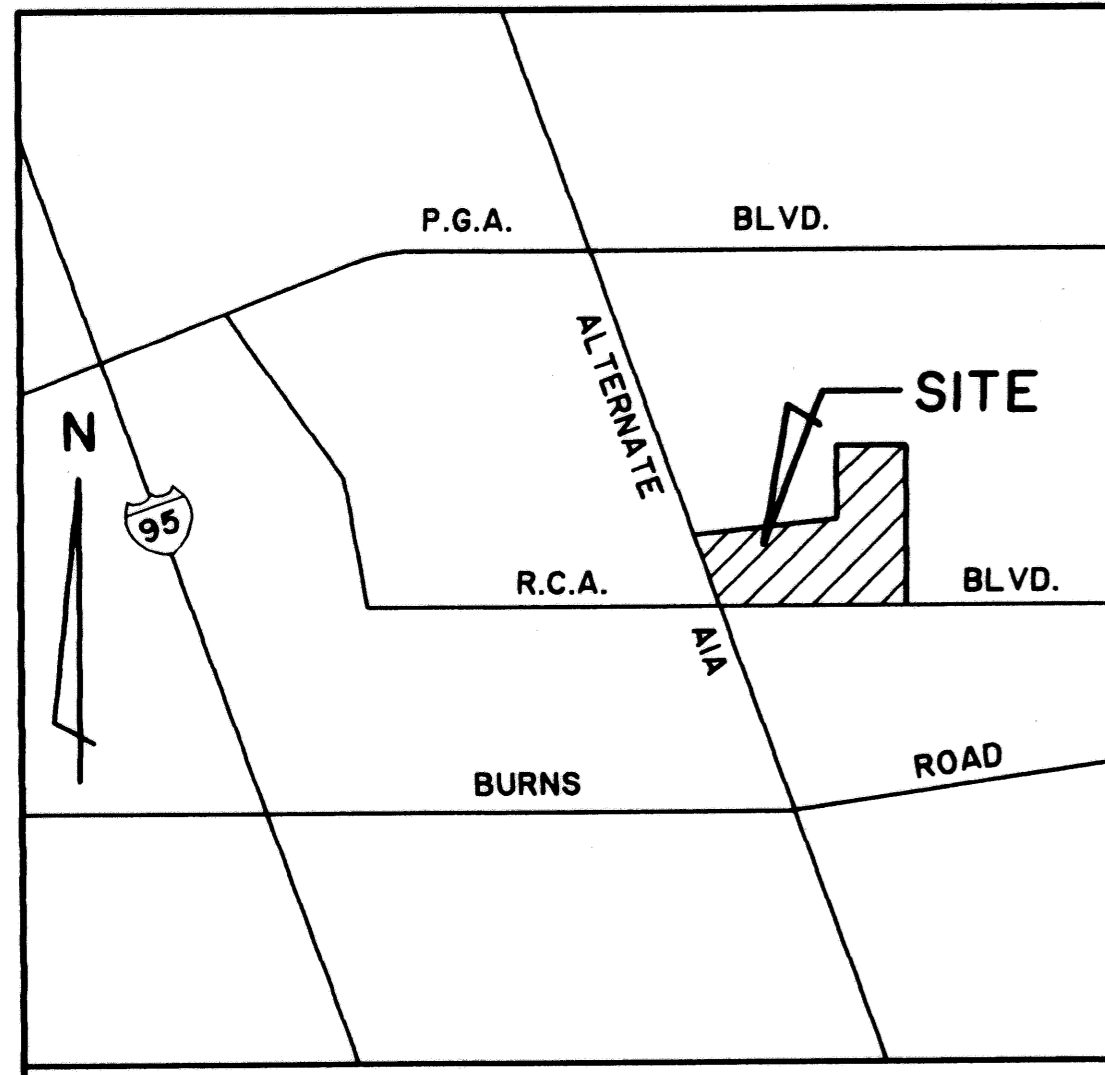
OCTOBER, 2003 SHEET 2 OF 3

NOTE : SEE SHEET 3 OF 3 FOR EASEMENT DIMENSIONAL DATA

PARCEL I  
LEGACY PLACE  
( PLAT BOOK 90, PAGES 119 THROUGH 121 )  
P.R.M. OFFSET  
LB 4396

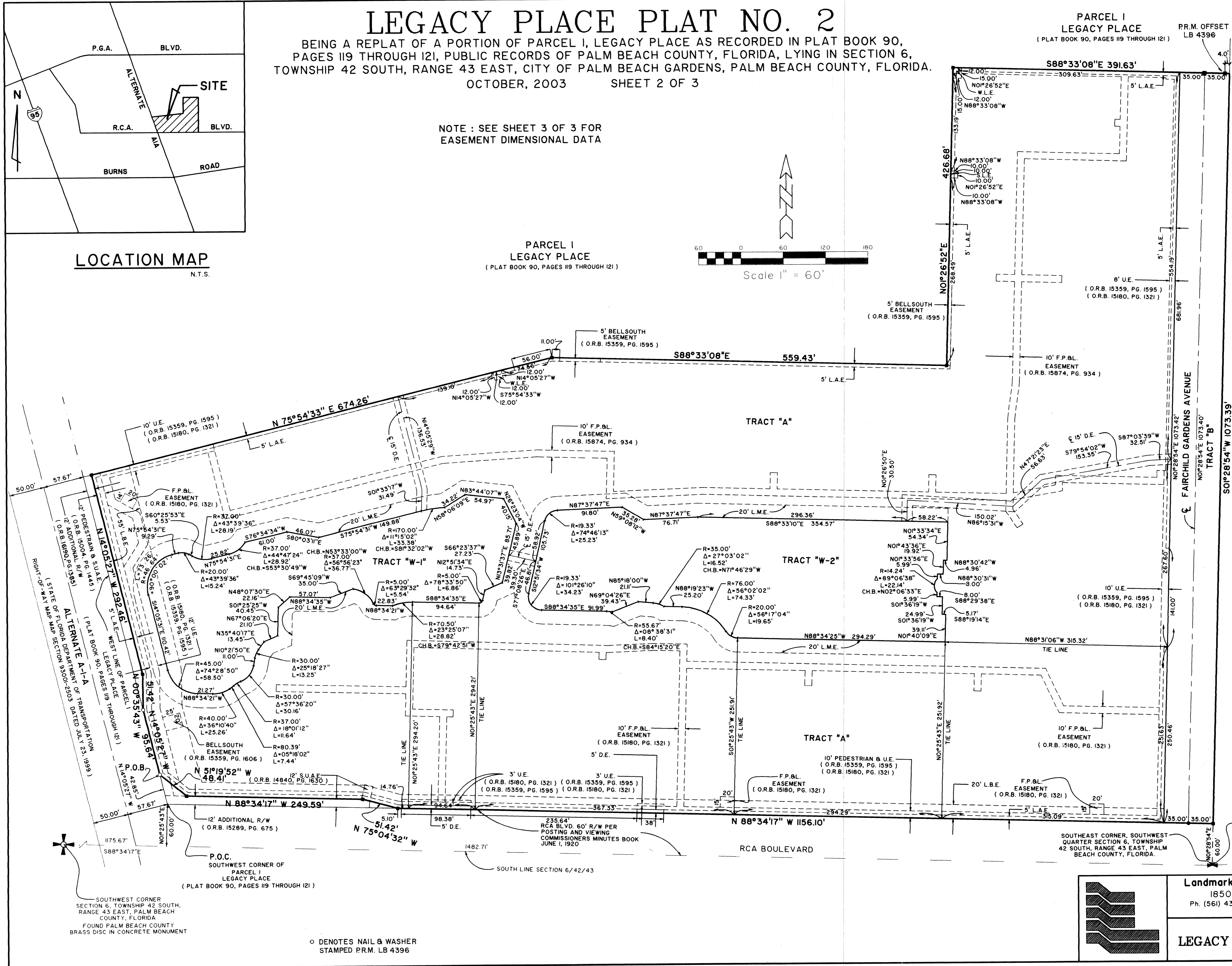
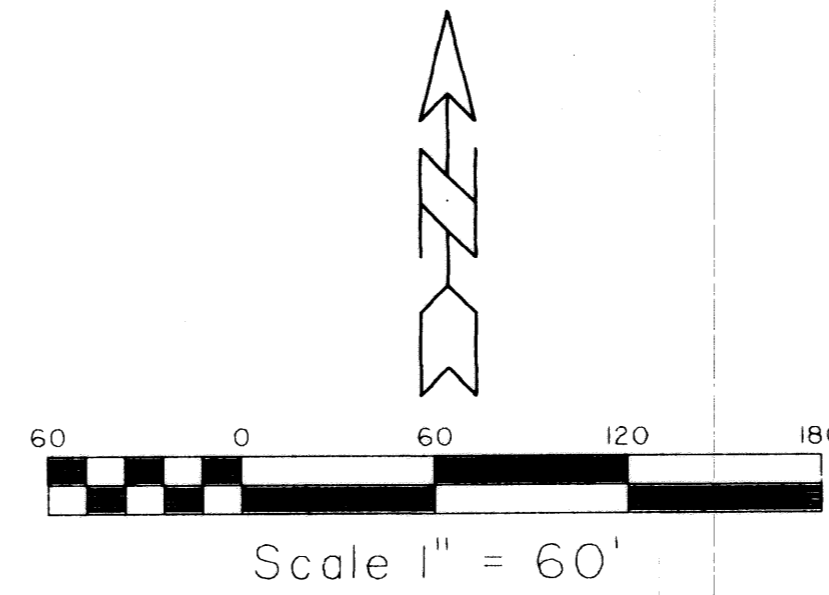
# 103

STATE OF FLORIDA 55  
COUNTY OF PALM BEACH  
THIS PLAT WAS FILED FOR RECORD AT \_\_\_\_\_  
M. THIS DAY OF \_\_\_\_\_ 2003  
AND DULY RECORDED IN PLAT BOOK NO. \_\_\_\_\_  
ON PAGE \_\_\_\_\_  
DOROTHY H. WILKEN, CLERK OF THE CIRCUIT COURT  
BY \_\_\_\_\_ D.C.



LOCATION MAP  
N.T.S.

PARCEL I  
LEGACY PLACE  
( PLAT BOOK 90, PAGES 119 THROUGH 121 )

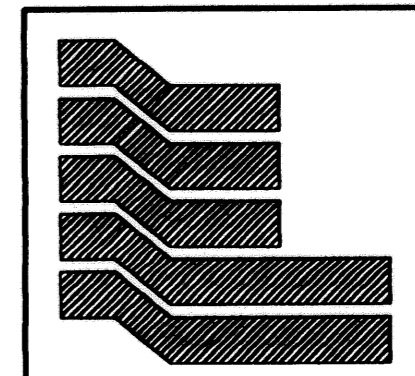


NOT PLATTED

SOUTHEAST CORNER  
SECTION 6, TOWNSHIP 42 SOUTH,  
RANGE 43 EAST, PALM BEACH  
COUNTY, FLORIDA  
FOUND PALM BEACH COUNTY  
BRASS DISC IN CONCRETE MONUMENT

SOUTHWEST CORNER  
SECTION 6, TOWNSHIP 42 SOUTH,  
RANGE 43 EAST, PALM BEACH  
COUNTY, FLORIDA  
FOUND PALM BEACH COUNTY  
BRASS DISC IN CONCRETE MONUMENT

○ DENOTES NAIL & WASHER  
STAMPED P.R.M. LB 4396



Landmark Surveying & Mapping Inc.  
1850 Forest Hill Boulevard  
Ph. (561) 433-5405 Suite 100 W.P.B. Florida  
LB # 4396

LEGACY PLACE PLAT NO. 2